



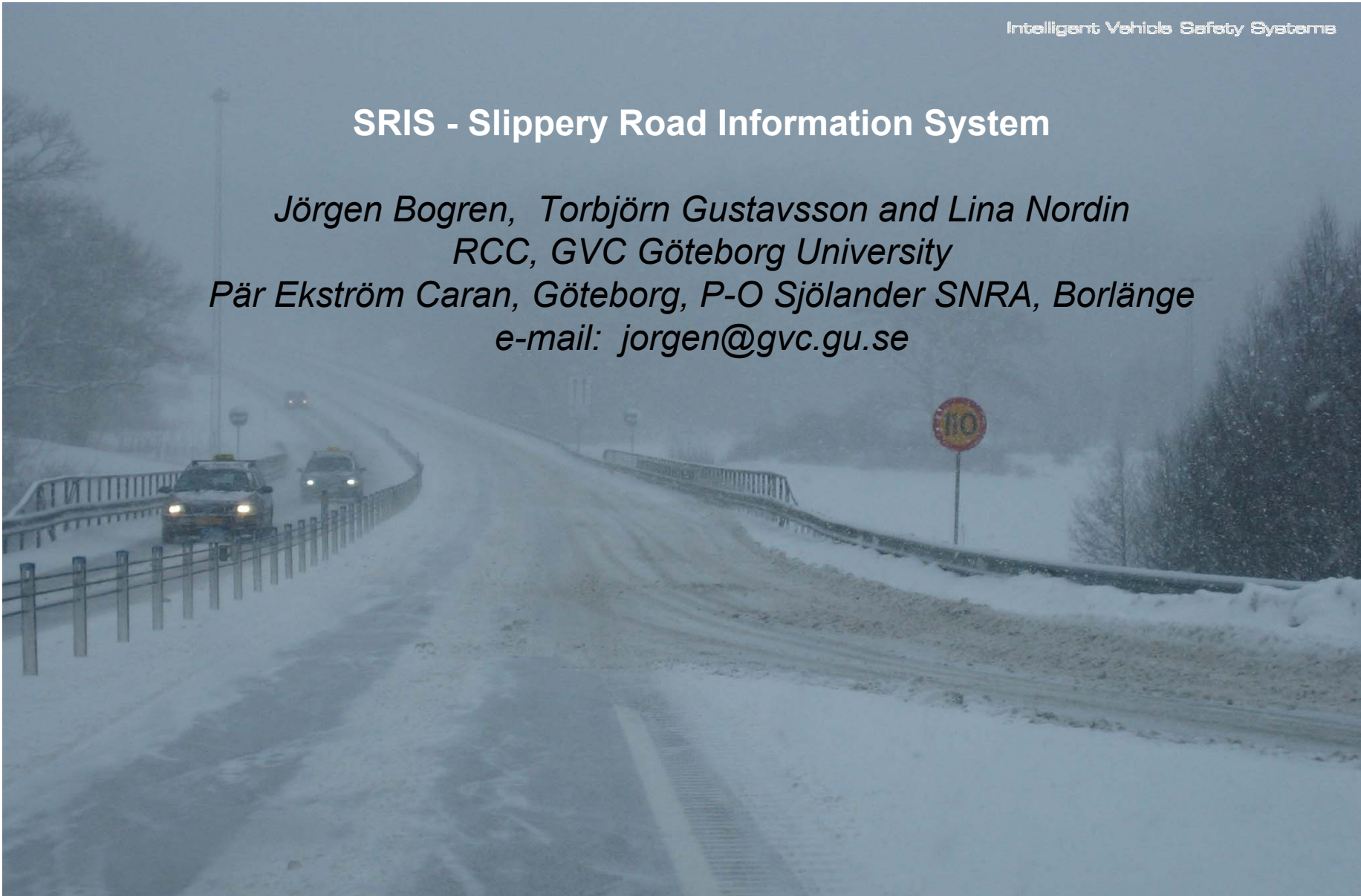
Slippery Road Information System, a project with the following partners:



## SRIS - Slippery Road Information System

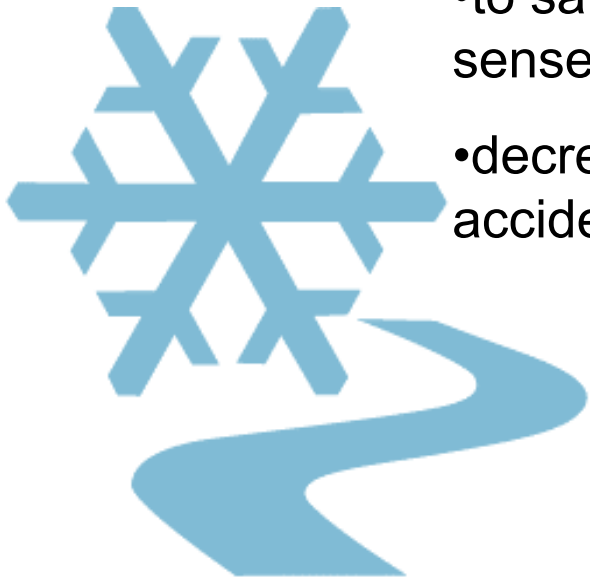
*Jörgen Bogren, Torbjörn Gustavsson and Lina Nordin  
RCC, GVC Göteborg University*

*Pär Ekström Caran, Göteborg, P-O Sjölander SNRA, Borlänge  
e-mail: [jorgen@gvc.gu.se](mailto:jorgen@gvc.gu.se)*



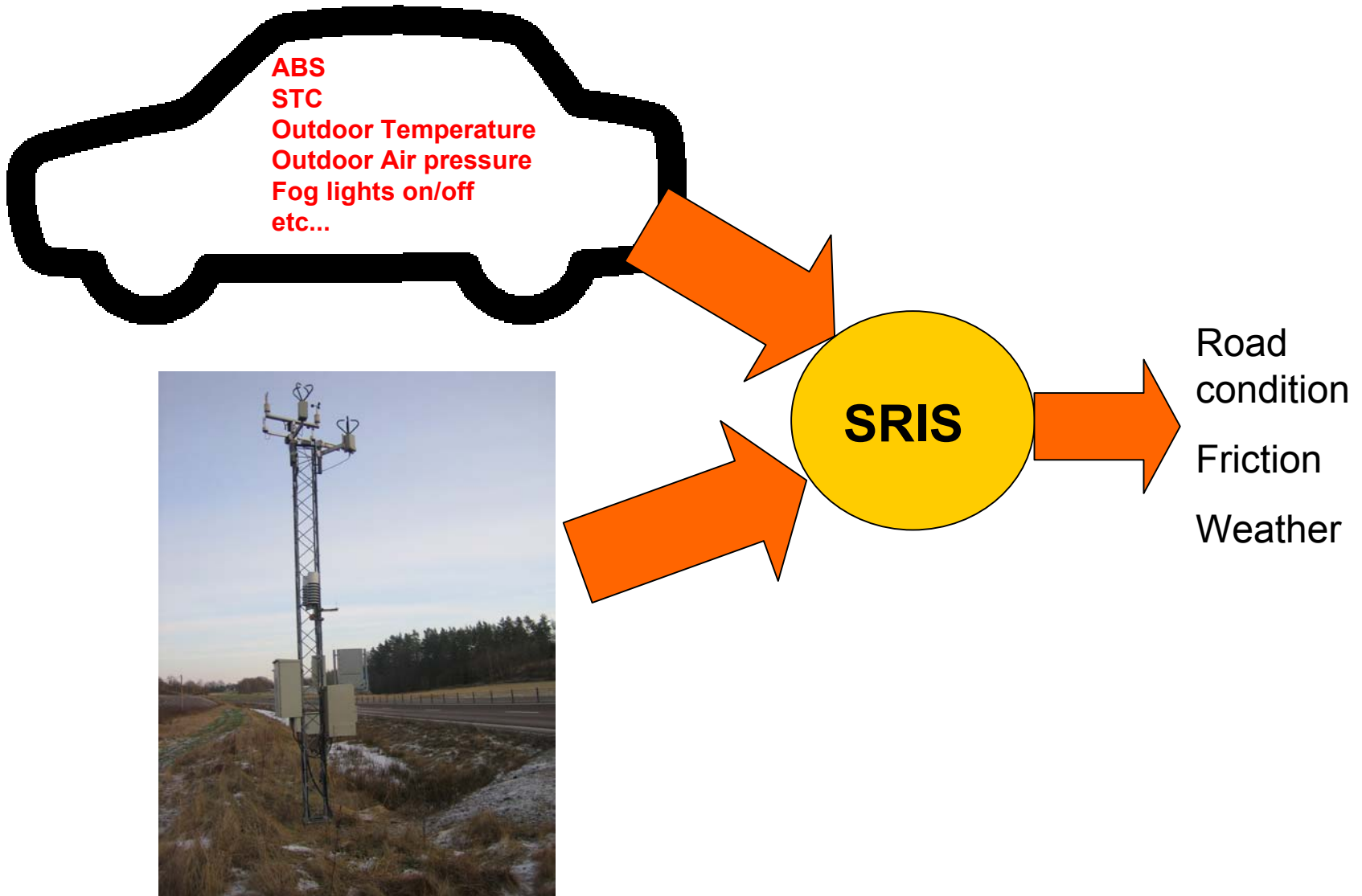
## The objectives and vision of SRIS

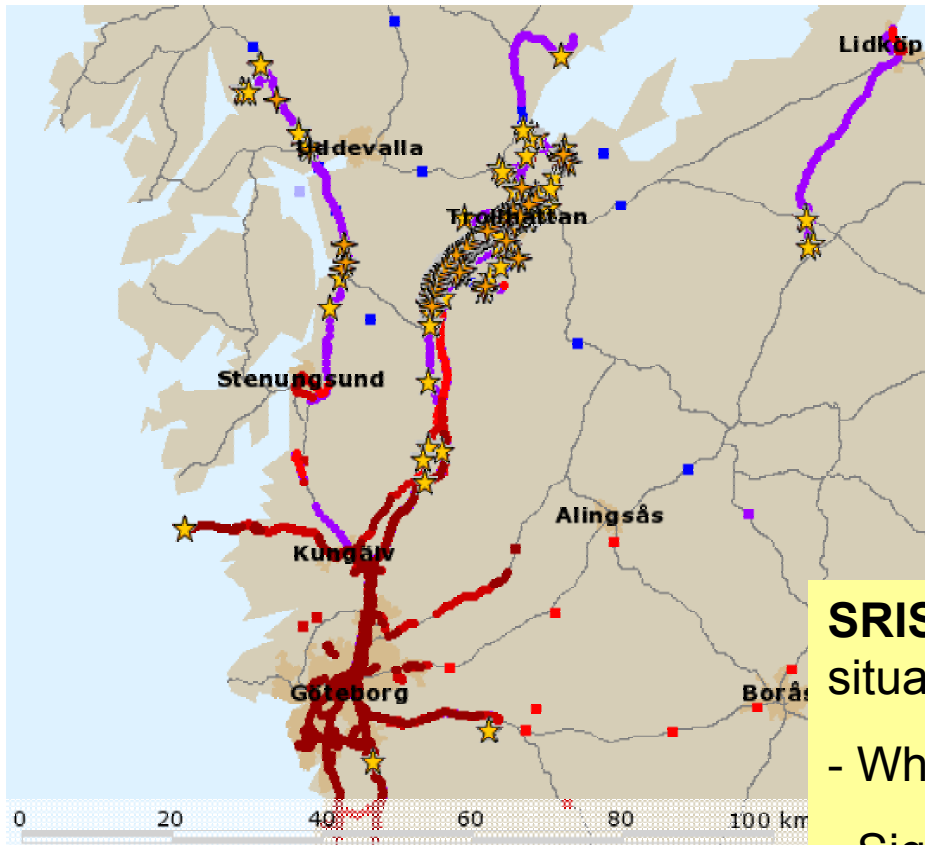
- optimize winter maintenance
- affect drivers to adjust their driving according to prevailing road conditions
- to save lives and at the same time give a greater sense of security and control
- decreased cost for winter maintenance and accident managements.



**SRIS**

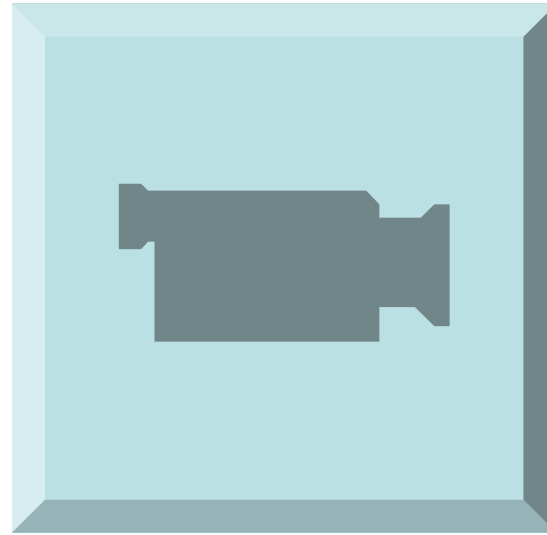
# SRIS - A New Method to Increase the Information Along Roads by Combining Data from Floating Car and Road Weather Stations





**SRIS** – provides a tool for interpreting a situation like this.

- Where is it slippery
- Significance of the car info. in relation to prevailing weather
- Which roads have been salted?



[www.sris.nu](http://www.sris.nu)

# Two Season Field Test

20

+

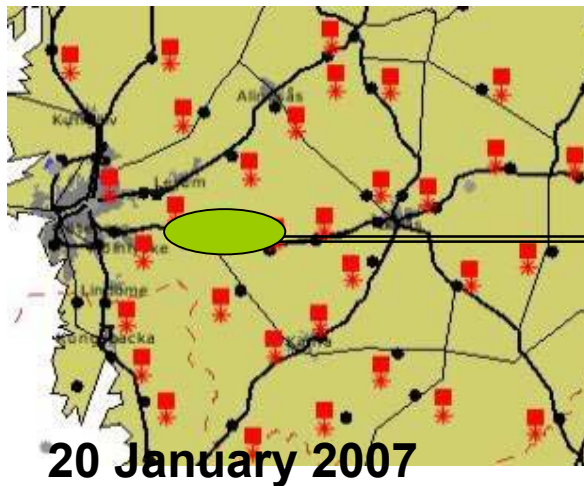
100



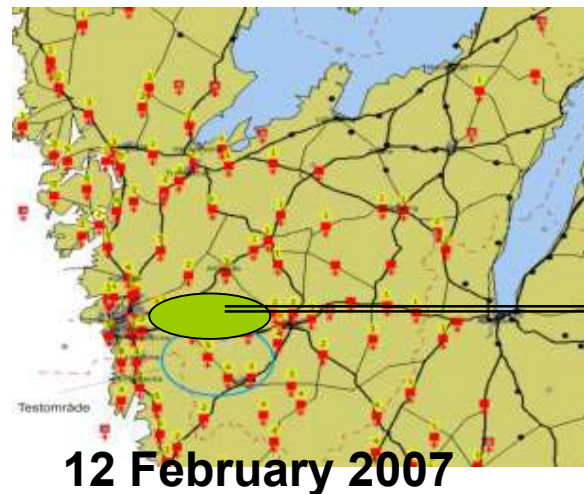
# Two similar weather situations:

*Use of a weather model in combination with floating car data improves the quality of road condition estimation*

RWIS/weather-data



Data from the cars







### Slippery Classes

- difficult road conditions roads
- risk of difficult road conditions roads
- snowy roads
- no problems reported

## The SRIS model can give information about

- performed maintenance activities.
- the degree of slipperiness as well as distinguish the road conditions of different lanes.
- how slippery a specific road stretch is during an ongoing snowfall
- the development of the road conditions after the snowfall has ceased.





# Contact information and Demonstration project Pär Ekström Caran Semcon

[www.sris.nu](http://www.sris.nu)

Slippery Road Information System, a project with the following partners:

