

# The Danish Road Weather Information System

Pernille Arnsfelt Hansen and Søren Brodersen (*Forecasters*)

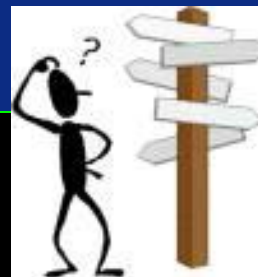
Danish Meteorological Institute

ID = 13



The Challenge:

*Provide complex meteorological information  
in a non-complex format*



The Construction Syndicate:

*Road People*

*Weather People*

*IT People*

The Users:

*Basically everyone with interests in slippery road conditions...*



## Task:

Provide information, easy to interpret

Use graphics and colours – as little text as possible

Easy access, use www, even mobile broadband

Provide a good manual

Teach the user the basics in road weather...

Teach the user the basics in road weather...

Road temperature negative ?

Snowfall or freezing precip ?

Wet road ?

Dewpoint Higher ?

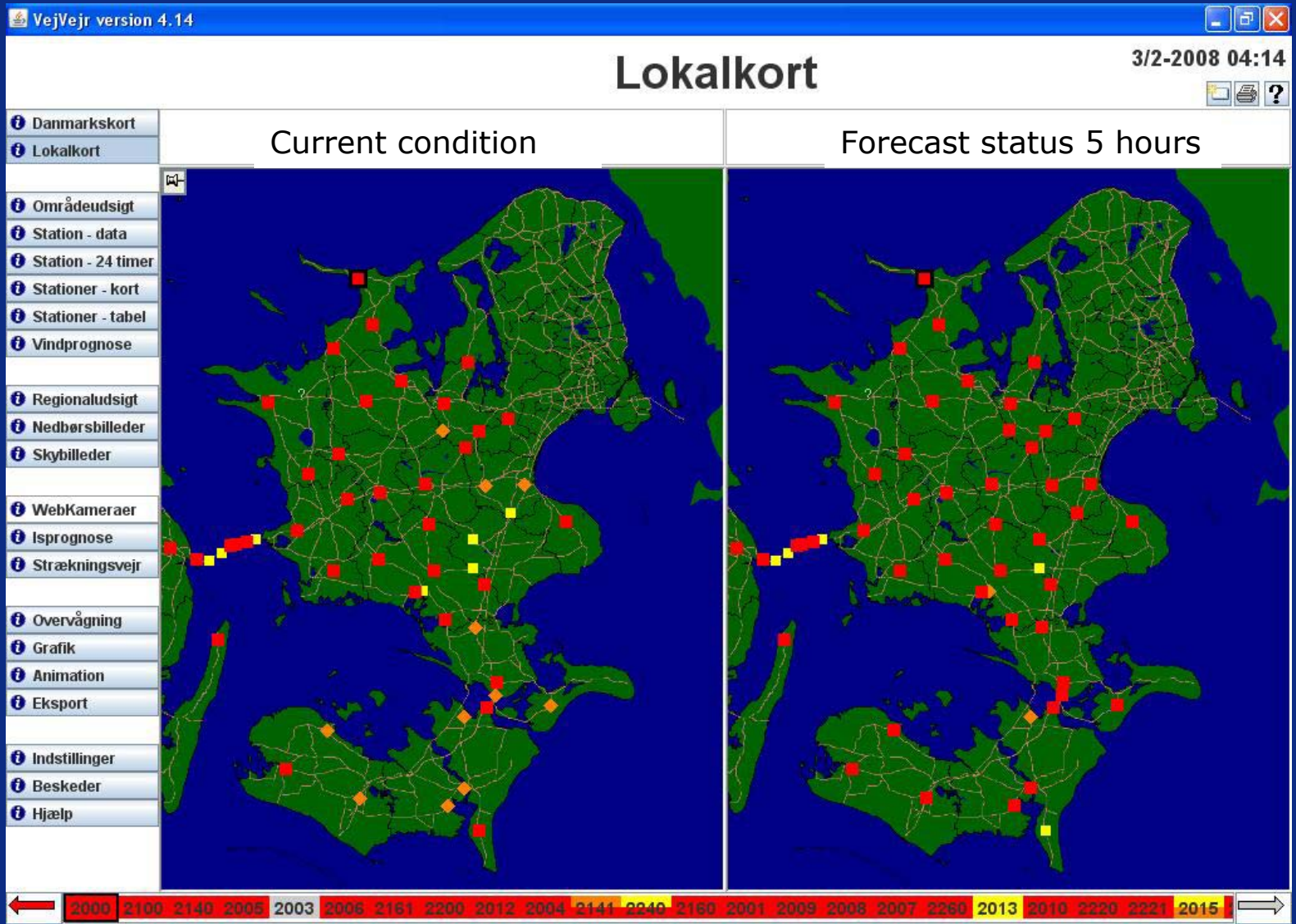
Describe this using colours



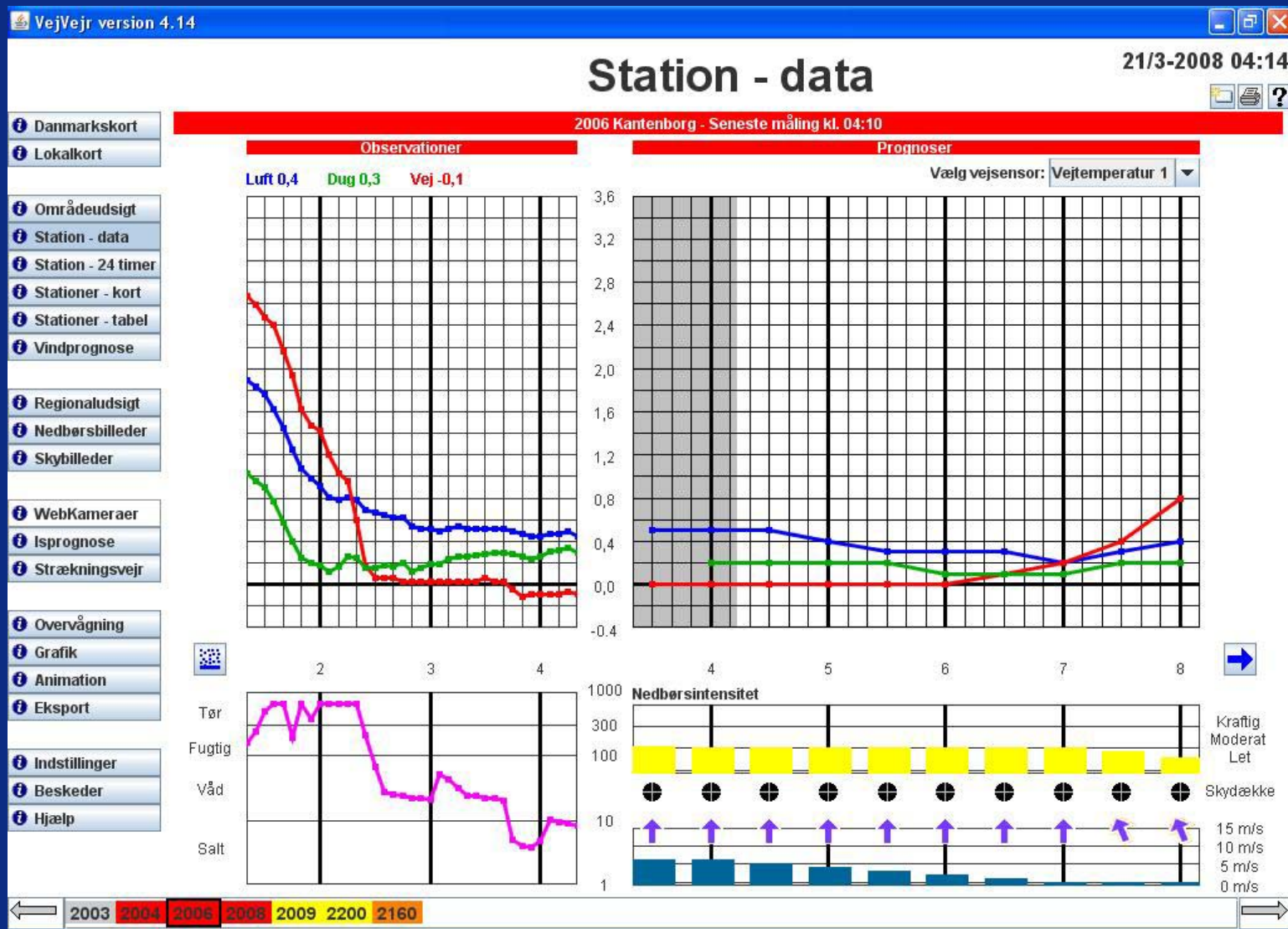
# Basic principles of colourcoding

Alarm status	Description
White	$T_{\text{Road}} > + 2 \text{ }^{\circ}\text{C}$
Yellow	$0 \text{ }^{\circ}\text{C} < T_{\text{Road}} \leq + 2 \text{ }^{\circ}\text{C}$
Orange	$T_{\text{Road}} \leq 0 \text{ }^{\circ}\text{C}$ and $T_{\text{Dew}} < T_{\text{Road}}$
Red	$T_{\text{Road}} \leq 0 \text{ }^{\circ}\text{C}$ and $T_{\text{dew}} \geq T_{\text{Road}}$ or $T_{\text{Road}} \leq 0 \text{ }^{\circ}\text{C}$ and $T_{\text{Dew}} = T_{\text{Air}}$

# Local-map



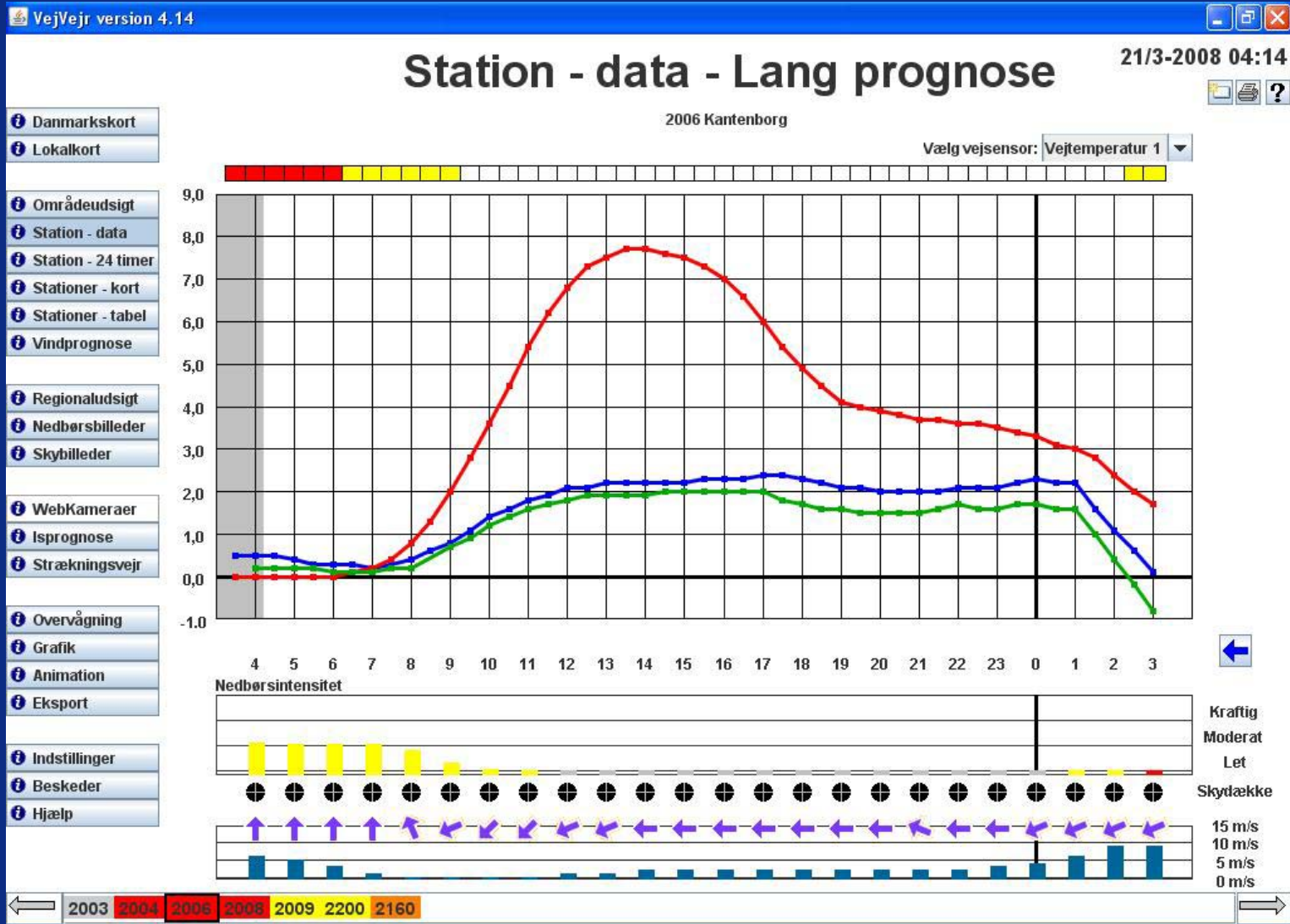
# Station - data



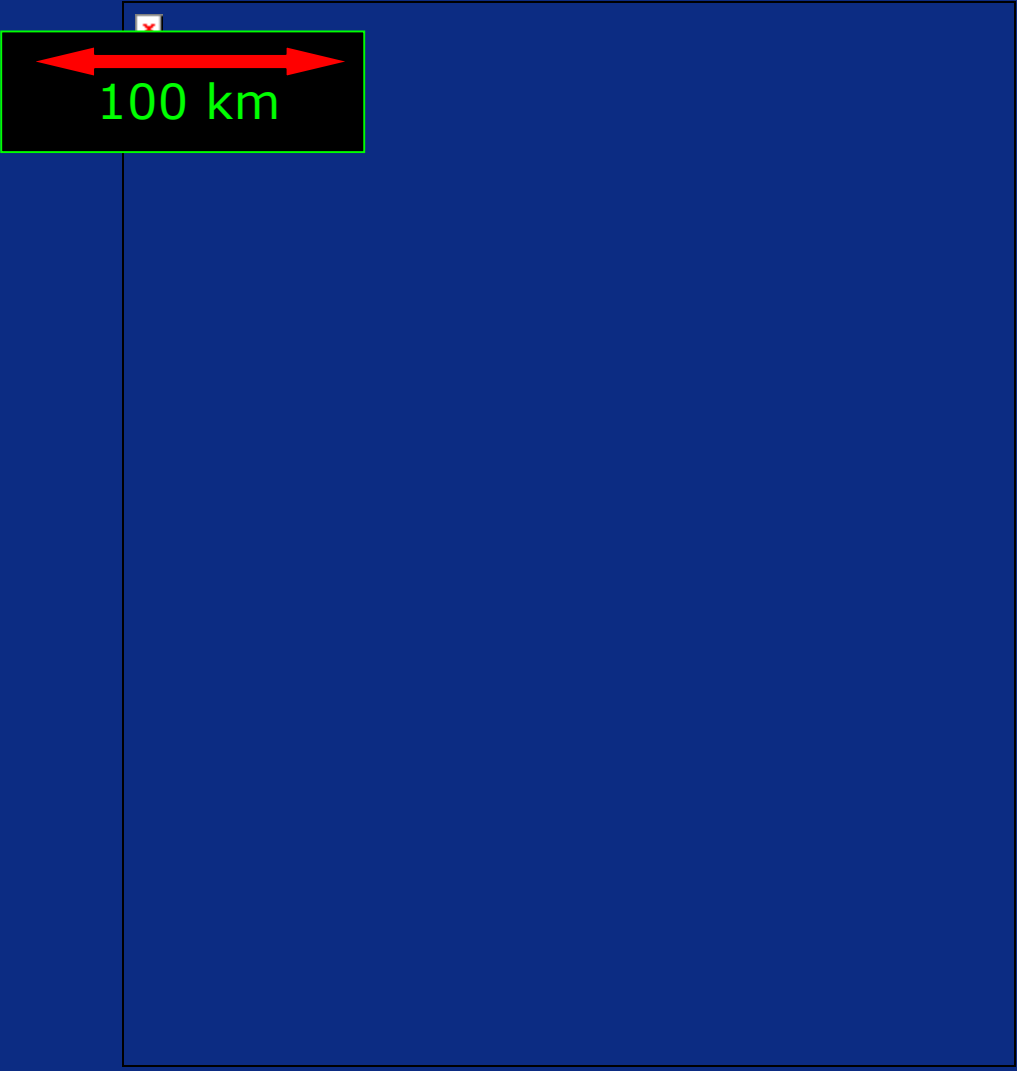


# Long forecast

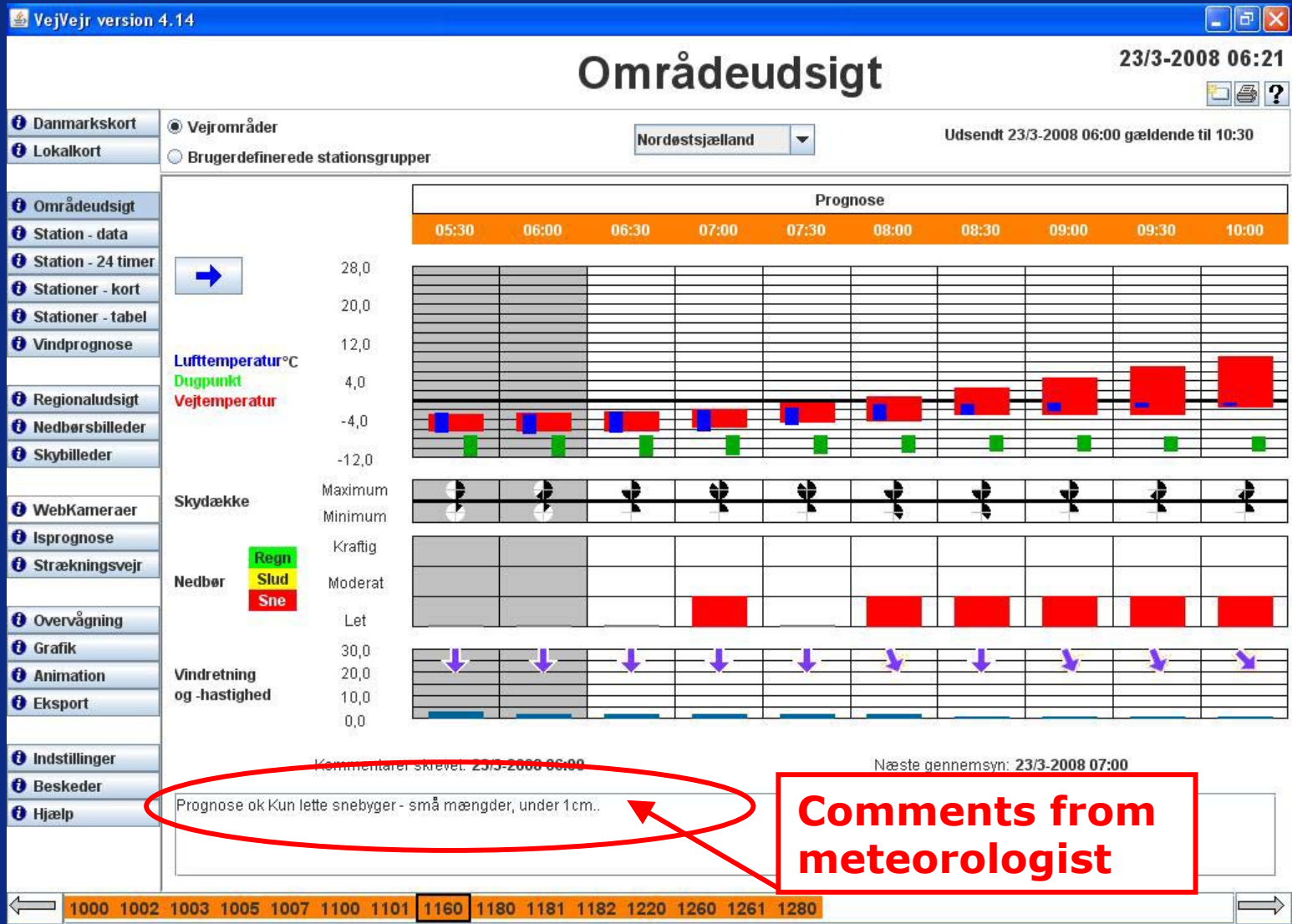
~330 stations !



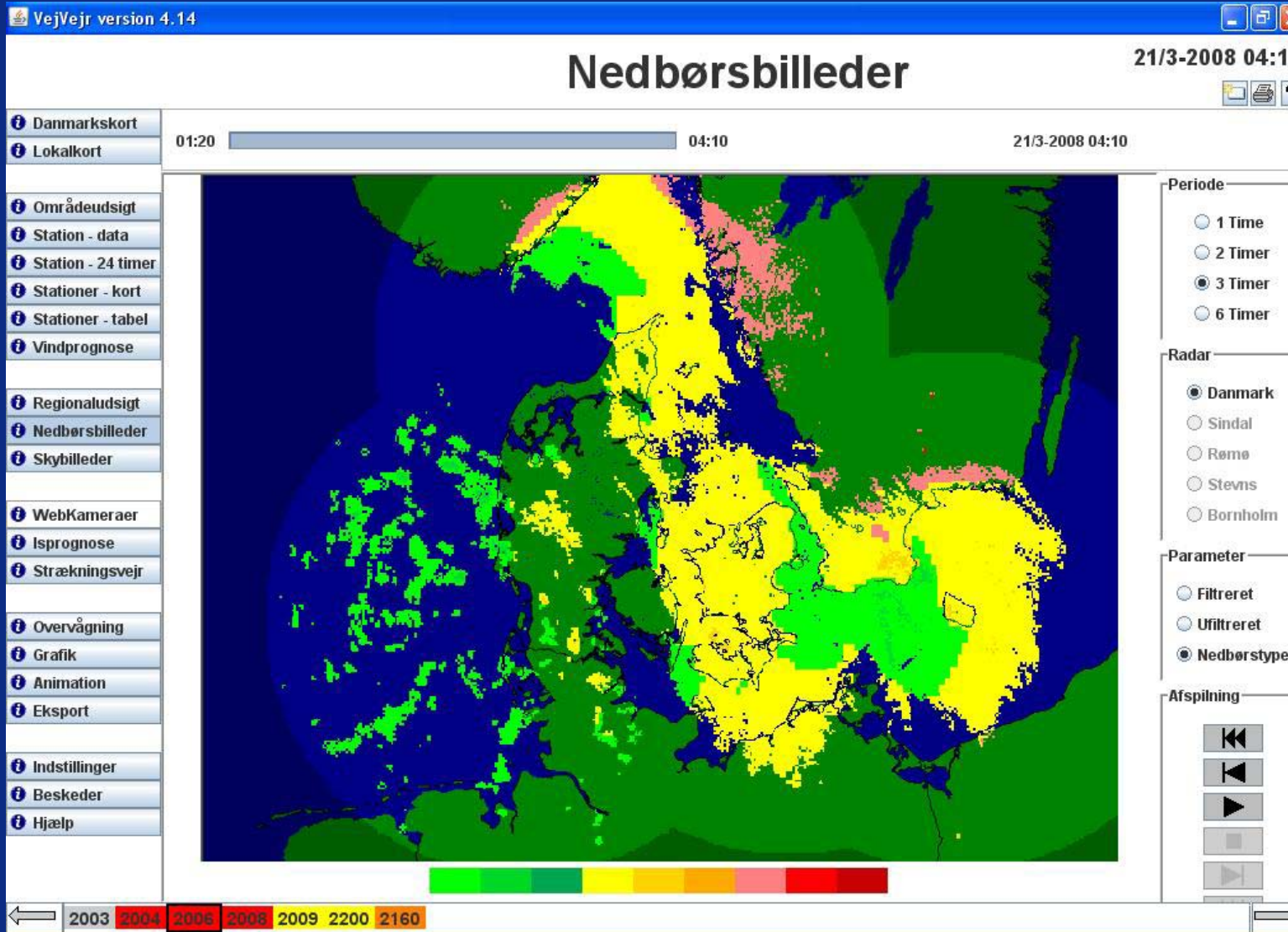
# Denmark in "weather-areas"



# Area forecast

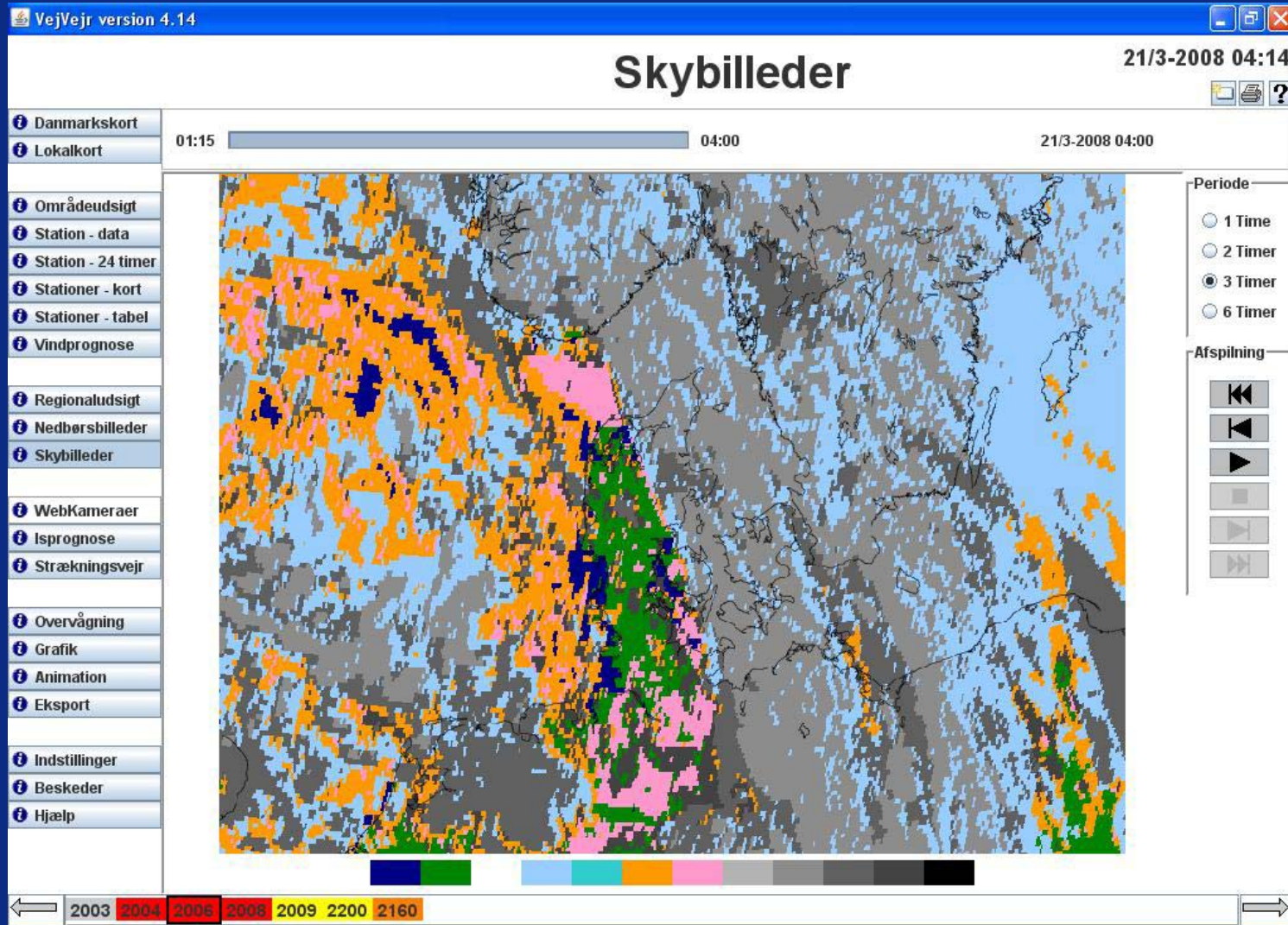


# Radar images (Precipitation)



Rain  
Mix  
Snow  
FRZ  
precip

# Satellite imagery (Cloudcover)



**Shades of grey:**  
Clouds are thick.

**Colours:**  
Clouds are scattered or high/thin

# Web-cams

VejVejr version 4.14


## WebKameraer

30/4-2008 13:22


- Danmarkskort
- Lokalkort
- Områdeudsig
- Station - data
- Station - 24 timer
- Stationer - kort
- Stationer - tabel
- Vindprognose
- Regionaludsig
- Nedbørsbilleder
- Skybilleder
- WebKameraer
- Isprognose
- Strækningevejr
- Overvågning
- Grafik
- Animation
- Eksport
- Indstillinger
- Beskeder
- Hjælp

Valgte og sidst viste kamera

Bjergby-M80-Nord 2008-04-30 13:17:13



Veje nord billed mod nord 2008-04-30 13:17:11



1160 1000 1101 1100 1001 1009 1003 1180 1004 1181 1182 1002 1220 1005 1007 1261 1008 2000 2005

# How to improve the system ?

- Feed-back from users
- Performance continuously verified
- Day seminar every year

# How to improve the users ?

- Intro demo
- 1-day course, beginners
- 1-day course, advanced



# Questions ?

[sb@dmi.dk](mailto:sb@dmi.dk)

[pah@dmi.dk](mailto:pah@dmi.dk)