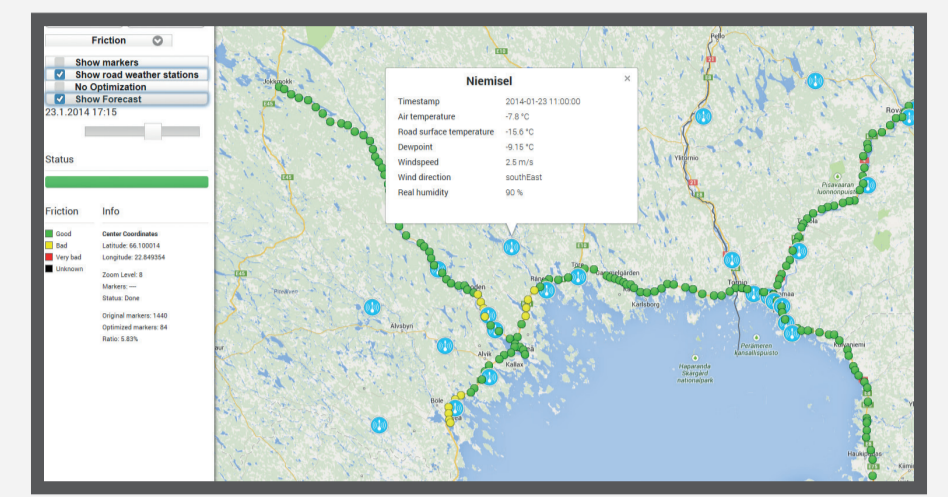
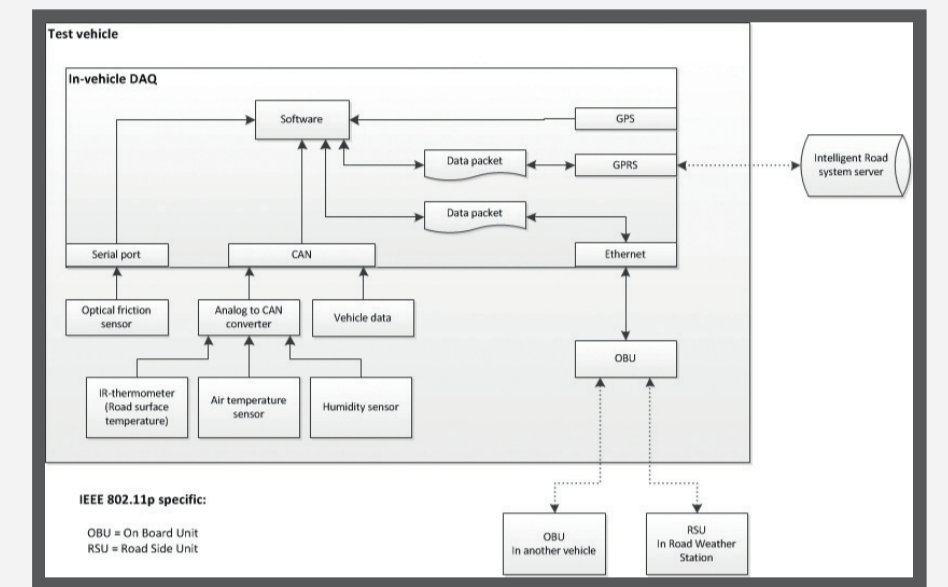


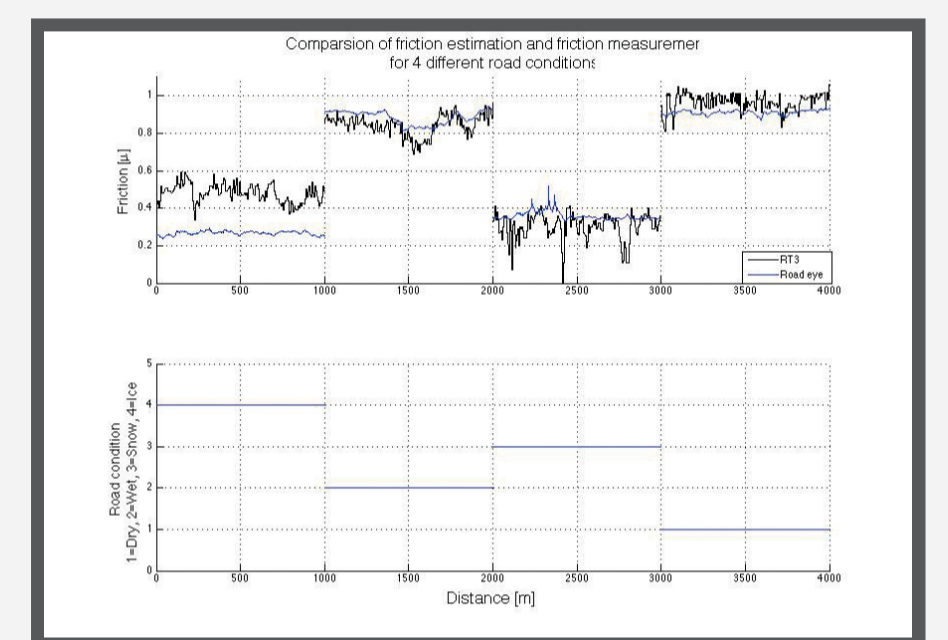
Visualization of road condition and friction data in a public web interface by using different in-vehicle sensors



Web interface visualization of frequently updated road friction forecast for pre-determined routes along with Swedish and Finnish road weather stations



In-vehicle data acquisition systems



Comparisons of friction estimation and friction measurement methods for different road conditions

# Intelligent Road

## Arctic RWIS demonstration platform

Presented by Mr. Matti Autoniemi, Arctic Power research unit of Lapland University of Applied Sciences, matti.autoniemi@arcticpower.fi

### PROJECT FACTS

- NAME** Intelligent Road
- ACRONYM** IR
- AIM** to demonstrate the applications of road weather technologies in a system level for increased safety
- FUNDING PROGRAMME** Interreg IV A North
- DURATION** 2012 – 2014
- PARTNERS** 3 main research partners, 6 private financiers, 4 national public co-financers
- LEAD PARTNER** Lapland University of Applied Sciences (Arctic Power research unit)

[www.intelligentroad.eu](http://www.intelligentroad.eu)

### THE IR-SYSTEM ACQUIRES DATA FROM...

multiple sources and visualizes it for the road users. The data sources are vehicles equipped with: on-board sensors and CANbus diagnostics, road weather stations (RWS), open traffic data, short-term local weather forecasts, frequently updated road-weather forecasts and local weather stations.

### THE DATA IS STORED TO THE SYSTEM SERVER...

to be processed and analysed. The demonstration platform uses the data to create a visualization of the current road conditions on the map which is displayed in a public web browser interface and in driver displays.

### THE SYSTEM ALSO FEATURES...

a modern intelligent road-weather station using IEEE 802.11p communication for communication with by-passing vehicles.

### IN LARGER SCALE, THE AIM IS TO...

deliver real-time data from the IR-system for improved road weather model development.