

---

# Road Weather Management Initiatives and Tools

Roemer Alfelor

Road Weather Management Program  
Federal Highway Administration, USDOT

---

Co-Authors: Paul Pisano, Gabe Guevara, Brenda Boyce

---



# Outline

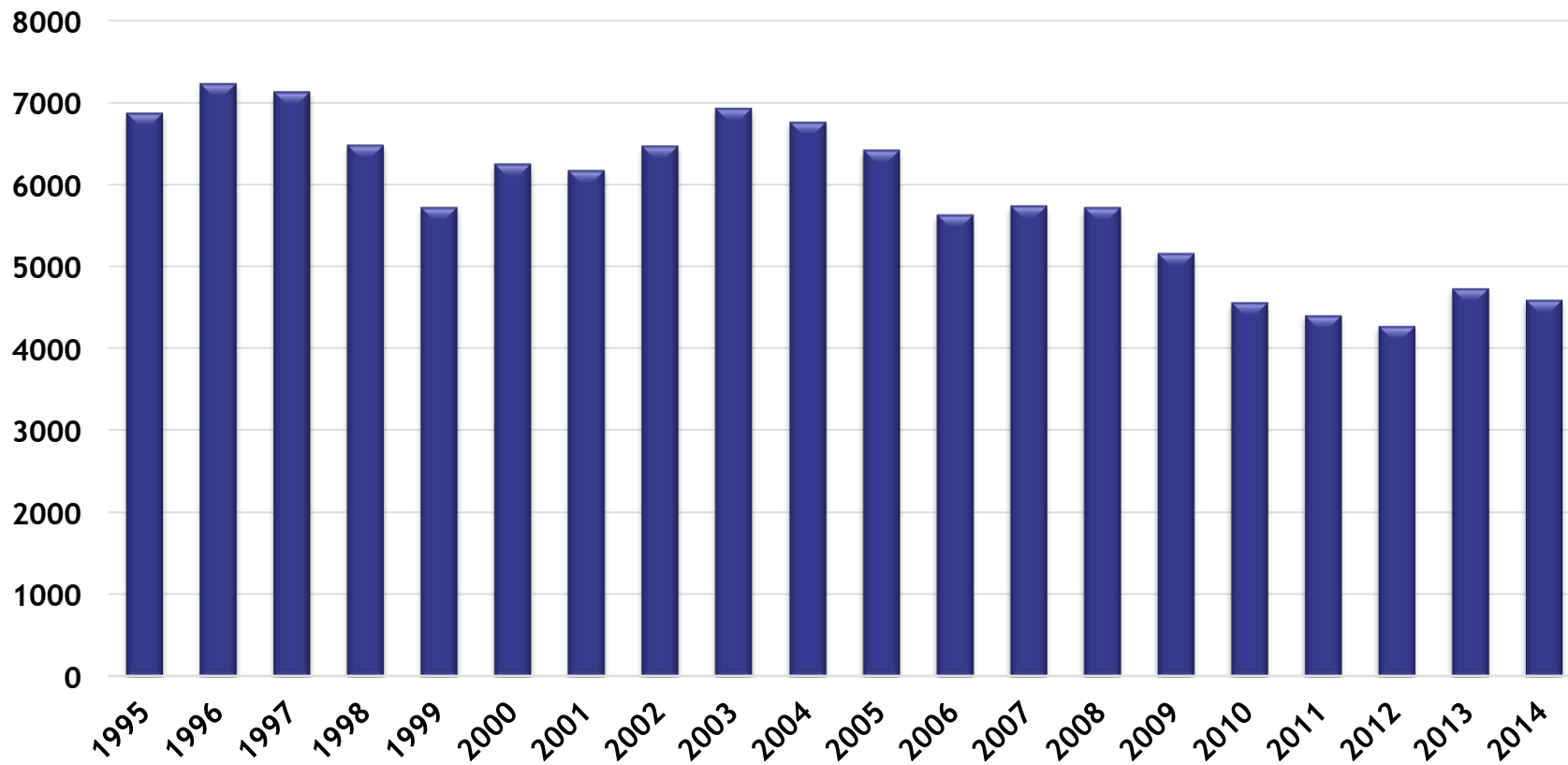
---

- The Road Weather Problem
- Pathfinder Project
- Integrated Modeling for Road Condition Prediction
- Road Weather Performance Management Tool



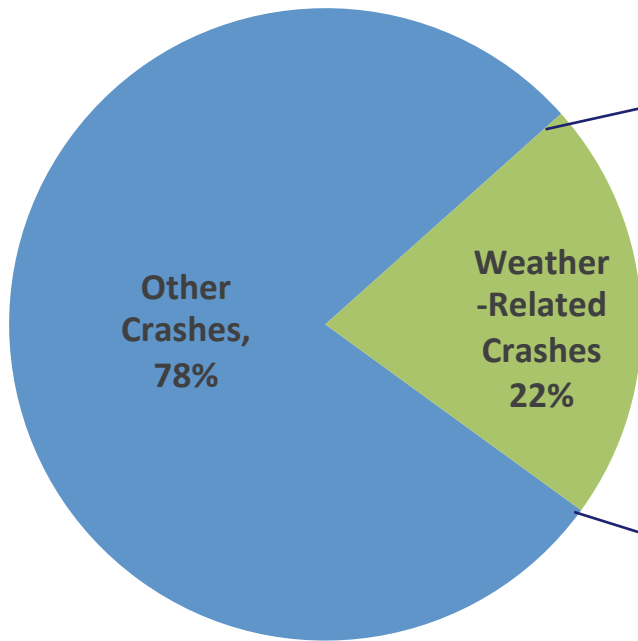
# Trend in Weather-Related Fatal Crashes

## Weather-Related Fatal Crashes

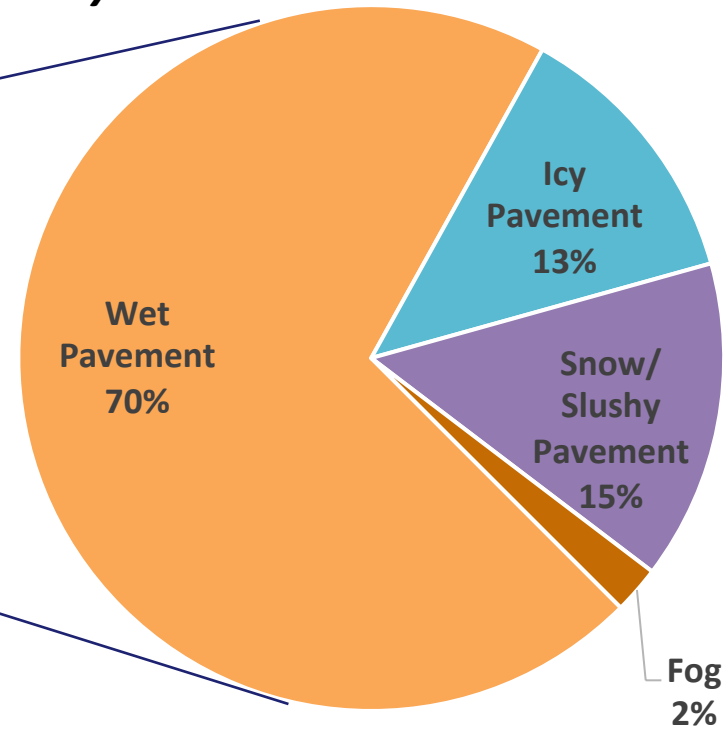


# Weather-Related Crashes

**Total Annual Crashes**  
**Average = 5,748,564**



**Weather Related Crashes**  
**By Road Weather Condition\***



\*Crashes that occurred under adverse conditions; additional factors such as rain, snow, and fog are not disaggregated from pavement conditions in this graphic. The percentage due to fog is for those crashes that occur under foggy conditions, but not wet, icy, or snowy pavement conditions.

**Source:** Road Weather Management Program, Table: Weather-Related Crash Statistics (Annual Averages), Available at: [http://www.ops.fhwa.dot.gov/weather/q1\\_roadimpact.htm](http://www.ops.fhwa.dot.gov/weather/q1_roadimpact.htm)



---

# PATHFINDER PROJECT



# Pathfinder Goals

---

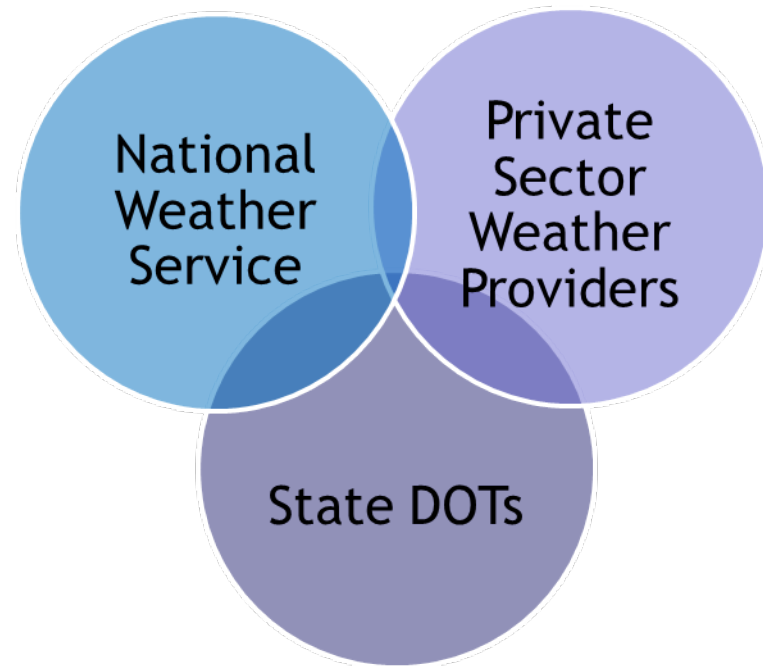


Pathfinder promotes collaboration between State DOTs and the Weather Enterprise with the ultimate goals of saving lives and property and keeping the economy moving.



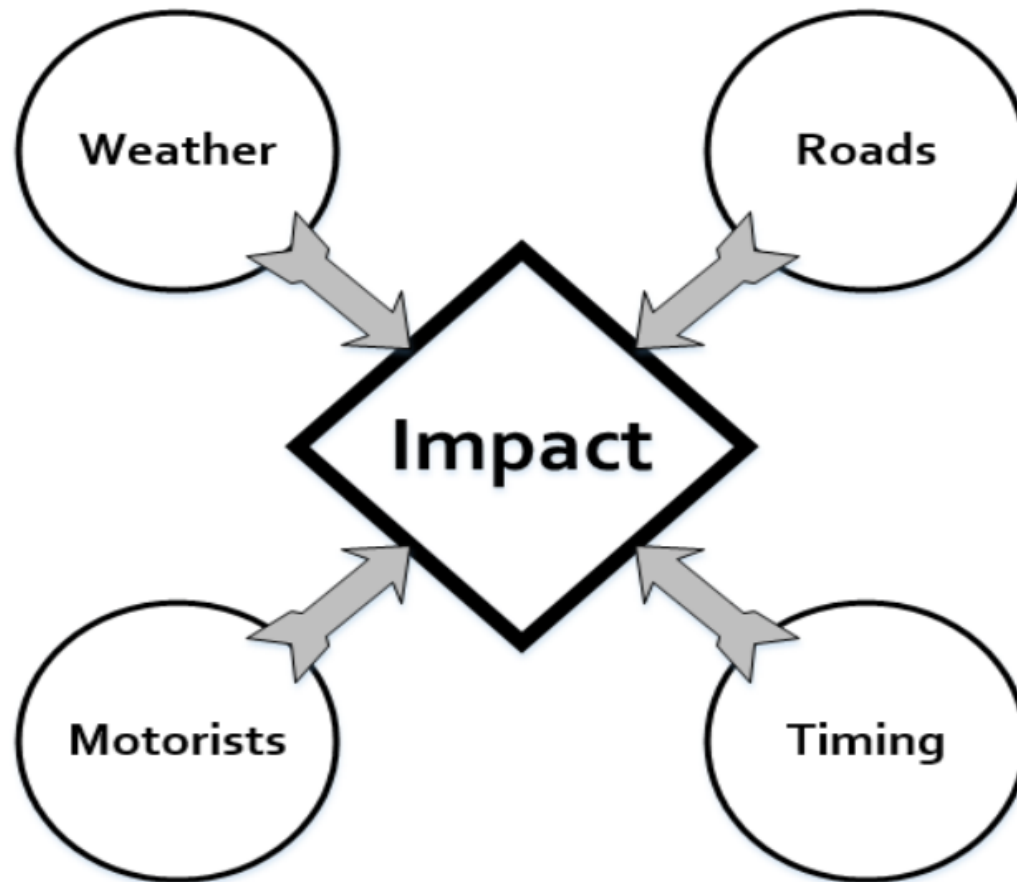
# Pathfinder Core Partners

- **National Weather Service:** Experts at weather forecasts
- **Private Sector Weather Providers:** Experts at road weather forecasts
- **State DOTs:** Experts at operating and maintaining the roadways - knowledgeable about the state of the roadways and the impact to the traveling public
- **State Emergency Managers:** Coordinate activities during high impact events



# Impacts Are More Than Just Weather

---





---

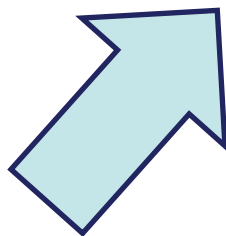
# INTEGRATED MODELING FOR ROAD CONDITION PREDICTION (IMRCP)



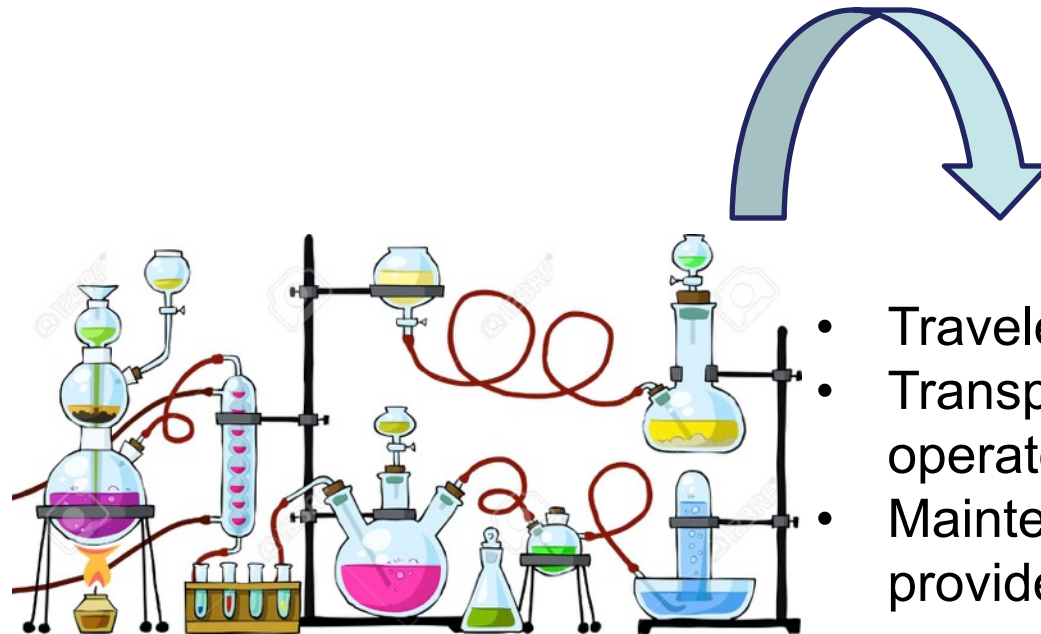
# Integrated Modeling for Road Condition Prediction (IMRCP)

Incorporates real-time and/or archived data and results from an ensemble of forecast and probabilistic models

- atmospheric and road weather
- traffic
- work zones
- incidents
- special events
- demand



Weather & Traffic Model Review - Complete  
Concept of Operations - Complete  
Detailed Requirements - Complete  
System Design & Architecture - In Progress



- Travelers
- Transportation operators
- Maintenance providers



# Example Application Scenarios

---

- Enhanced transportation system management and operations
  - Forecast-aware variable speed limits
  - Enhanced motorist advisories and warnings
  - Intelligent signal controls
- Traffic-aware winter maintenance decision support
- Weather- and traffic-aware routing optimization
  - Commuters
  - Long-haul freight
  - Maintenance vehicles.
  - Emergency responders



---

# ROAD WEATHER PERFORMANCE MANAGEMENT (RW-PM) TOOL



# Road Weather Performance Management (RW-PM) Tool

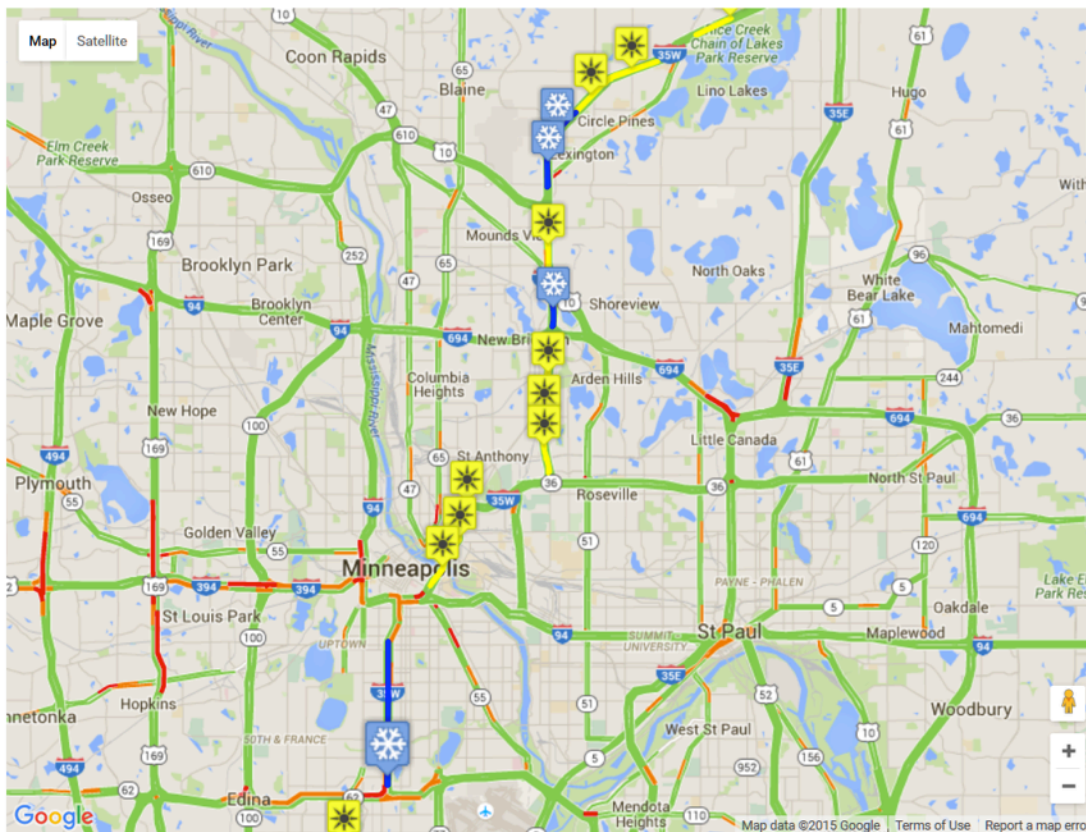
- Utilizes real-time traffic volume/speed, road weather, maintenance and traffic control strategies
- Continuously updates traffic control, maintenance and advisory recommendations as road weather conditions evolve
- Publishes traveler information into vehicles.



# Road Weather Maintenance

## Road Weather Maintenance

Road Weather Maintenance Administration



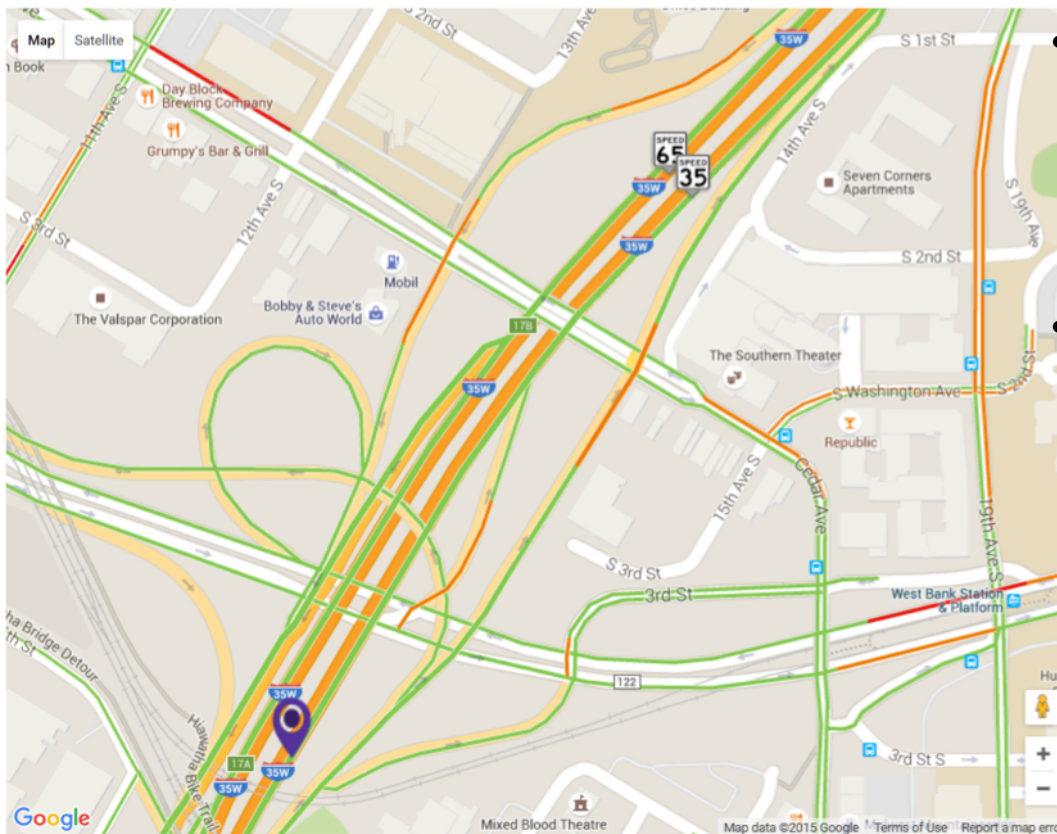
- Displays the segment data Road Treatment Recommendations from PikaAlert
- Each site shows an icon based on its current pavement condition



# Traffic Control

## Traffic Control

Traffic Control Administration



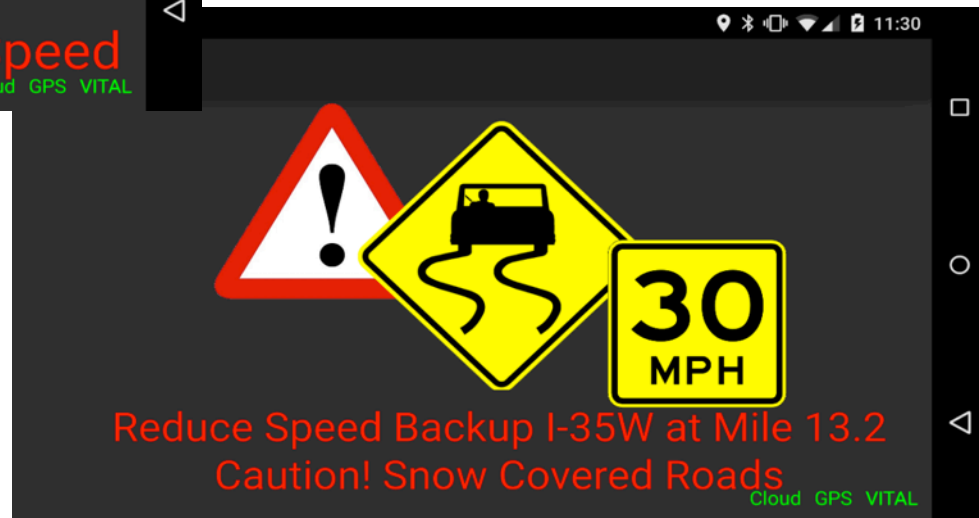
- Displays the existing Traffic Backups (Queues) and Recommended Speeds (from Speed Harmonization).
- Advisories generated by the system are sent to the connected vehicles along with the speed sensor information from MnDOT.



# Sample Motorist Advisories



Icy Conditions Ahead With Speed Recommendation



Backup (Queue) with Speed Recommendation (Speed Harm) and Snow Covered Roads





# Contact Information

---

Roemer Alfelor

Road Weather Management Program

Federal Highway Administration

(202) 366-9242

Roemer.Alfelor@dot.gov

